

State of Wyoming Corner Record

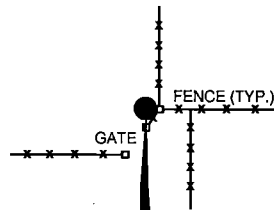
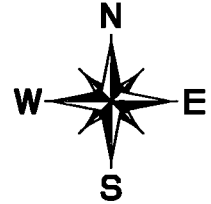
(In compliance with the **CORNER PERPETUATION AND FILING ACT**, Wyoming Statutes, 1997 Section 33-29-140 et. seq., and the Rules and Regulations of the Board of Professional Engineers and Professional Land Surveyors)

Record of original survey and citation of source of historical information (if corner is lost or obliterated). Description of corner monumentation evidence found and/or monument and accessories established to perpetuate the location of this corner. Sketch of relative location of monument, accessories, and reference points with course and distance to adjacent corner(s) (if determined in this survey).

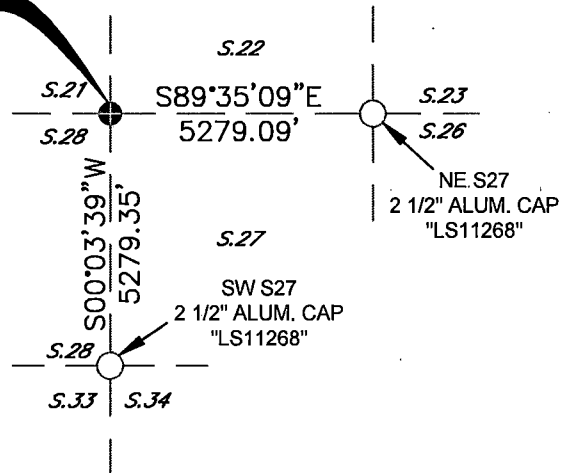
Original Record: (J.W. Hammond - 1872) Set sandstone 18x10x5 for corner to sections 21, 22, 27 & 28

Evidence Found: No evidence of original stone. I evaluated fences in all directions from approximate corner. I determined the jog fence corner to be the best evidence of the corner.

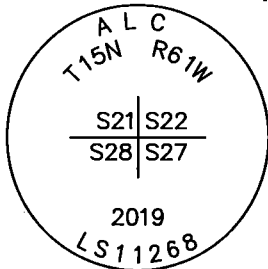
Perpetuation: On the northwest side of the fence corner, I set a 5/8" x 24" rebar with 2 1/2" diameter aluminum cap marked as shown below. Cap is set flush with ground and situated as shown below.



THIS CORNER
SET 2 1/2" ALUM.
CAP "LS11268"



Monument Inscription

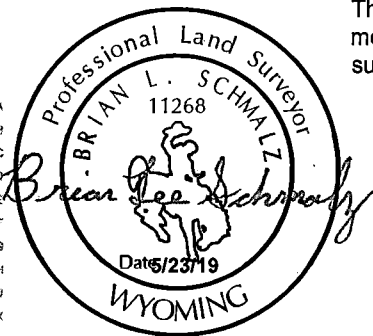


2 1/2 INCH DIAMETER
ALUMINUM CAP

Date of Field Work: 05-02-2019 Office Reference: Book 48 Pg 6

Cross Index Plat

1	2	3	4	5	6	7	8	9	10	11	12	13	14	15	16	17	18	19	20	21	22	23	24	25		
A																									A	
B																									B	
C	6	5	4	3	2	1																			C	
D																										D
E																										E
F																										F
G	7	8	9	10	11	12																				G
H																										H
J																										J
K																										K
L	18	17	16	15	14	13																				L
M																										M
N																										N
O																										O
P	19	20	21	22	23	24																				P
Q																										Q
R																										R
S																										S
T	30	29	28	27	26	25																				T
U																										U
V																										V
W																										W
X	31	32	33	34	35	36																				X
Y																										Y
Z																										Z
1	2	3	4	5	6	7	8	9	10	11	12	13	14	15	16	17	18	19	20	21	22	23	24	25		



This corner record was prepared by me or under my direction and supervision.

BRIAN L. SCHMALZ
PLS 11268

PO BOX 502 | 135 PINE STREET
BUFFALO, WY 82834 | 307.684.1200



Altitude Land Consulting, P.C.
ENGINEERING | SURVEYING | CONSULTING



RECP #: 754166

RECORDED 5/30/2019 AT 3:22 PM BK# 2623 PG# 663
Debra K. Lee, CLERK OF LARAMIE COUNTY, WY PAGE 1 OF 1

Corner Name NW Sections 27, T 15 N, R 61 W, 6th P.M. County.: LARAMIE Cross-Index No.: R-13